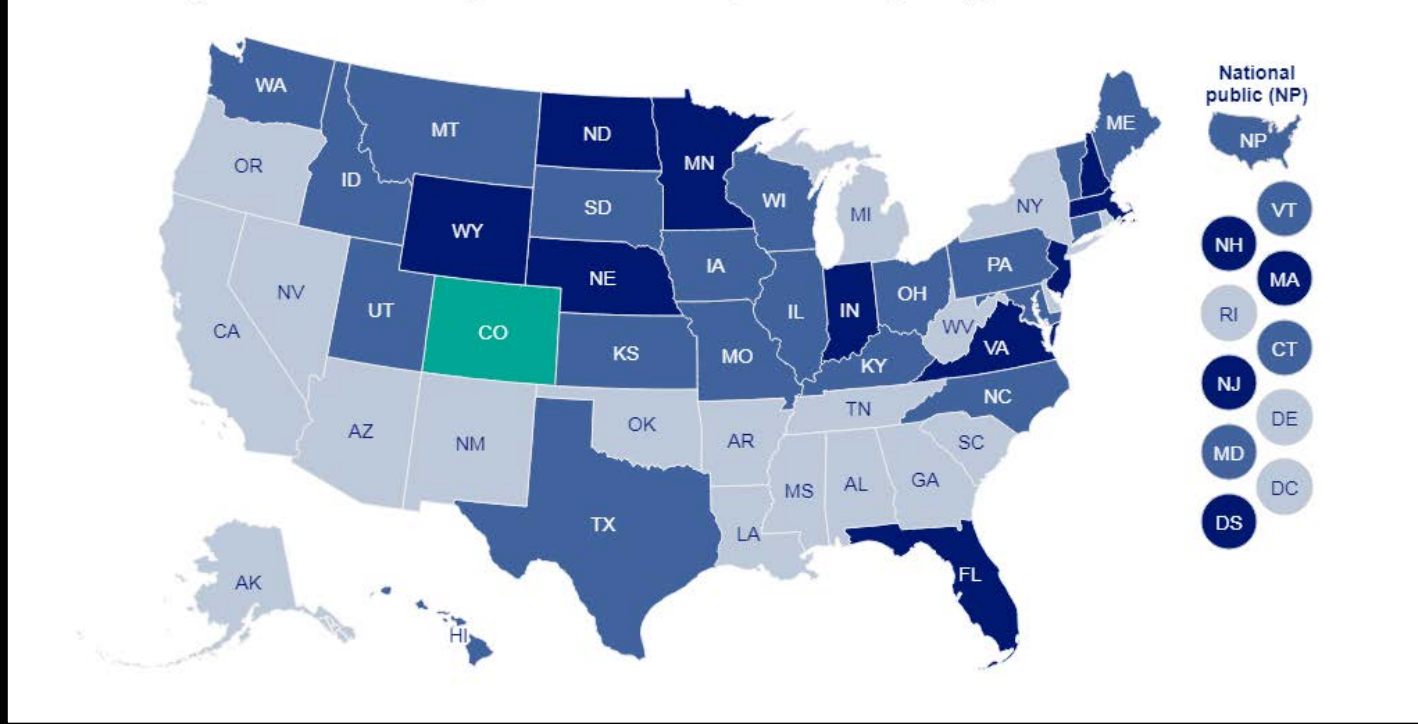


NAEP 2017 Math Grade 4: Average Scale Score



Mathematics, grade 4
Difference in average scale scores between all jurisdictions and Colorado, for All students [TOTAL], 2017

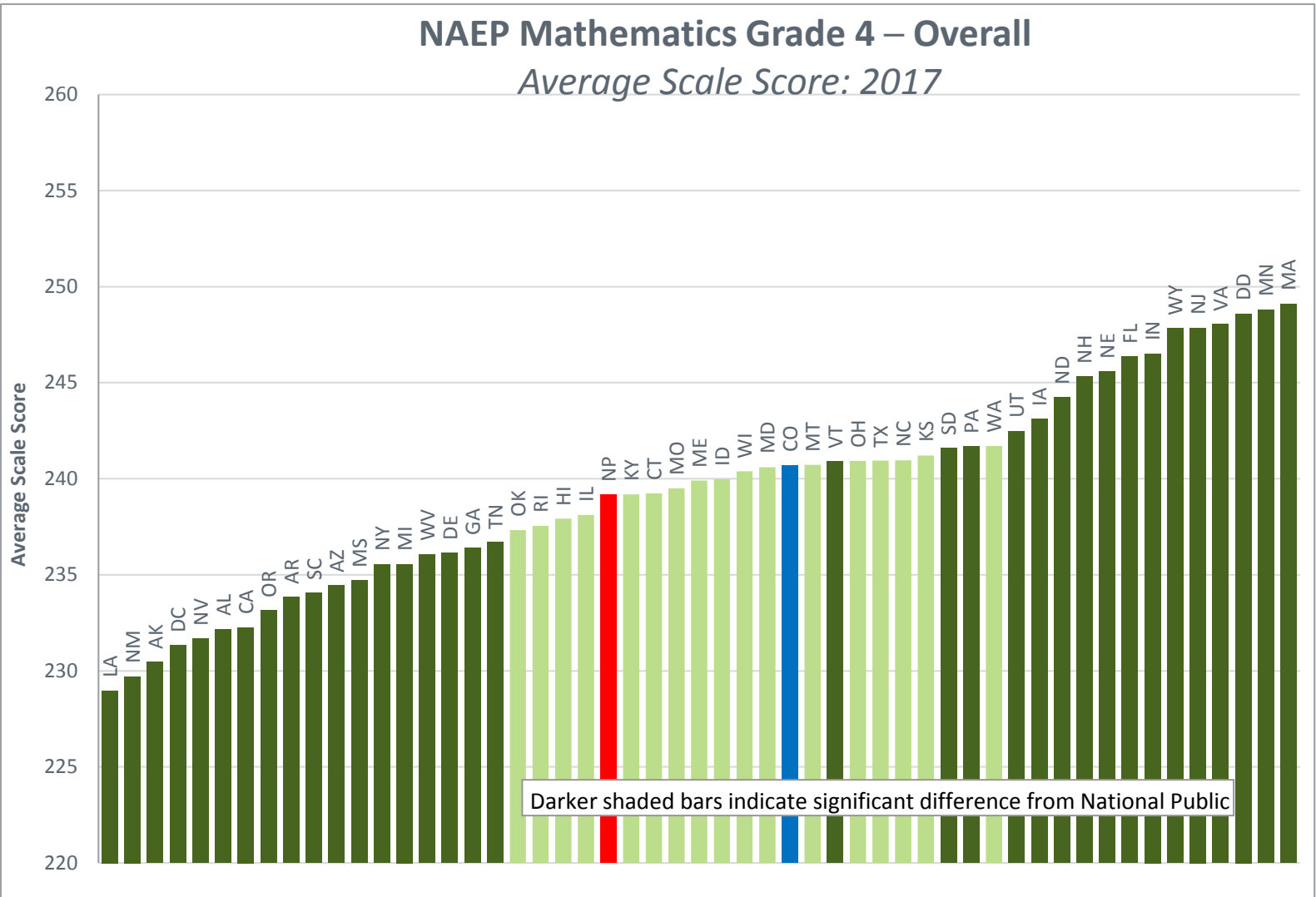


The map compares Colorado 4th graders average scale score on the NAEP 2017 Math assessment to the other 49 states, the District of Columbia and the Department of Defense schools. Colorado which is shaded green is the focal state. States shaded light blue scored lower than Colorado. Dark-blue shaded states scored higher than Colorado and grey-shaded states scored the same as Colorado. Because NAEP results are based on samples, there is a margin of error associated with each score or percentage. Therefore, only those differences in scores or percentages that meet NAEP's standards for statistical significance are reported as higher or lower.



National NAEP Math Grade 4 Average Scale Scores

NAEP Mathematics Grade 4 – Overall
Average Scale Score: 2017

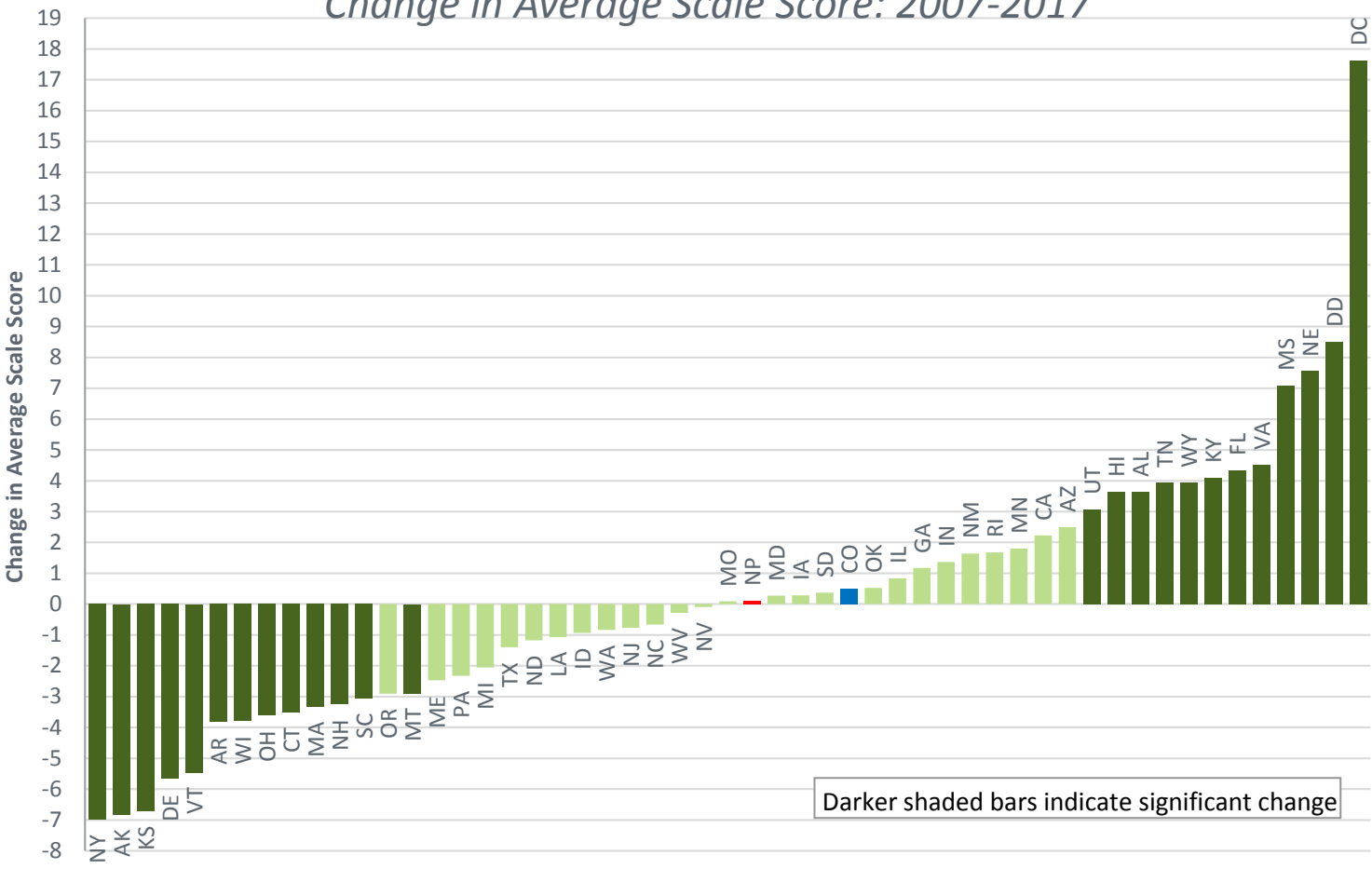


Using the average scale score on the NAEP 2017 Math assessment for each state, this bar graph compares Colorado 4th graders with the other 49 states, the District of Columbia and the Department of Defense schools. The red bar indicates the National Public average. The blue bar represents Colorado. Darker shaded bars indicate significant difference from National Public average.

Darker shaded bars indicate significant difference from National Public

National Change in NAEP Grade 4 Math Scale Scores Over Ten Years

NAEP Mathematics Grade 4 – Overall
Change in Average Scale Score: 2007-2017



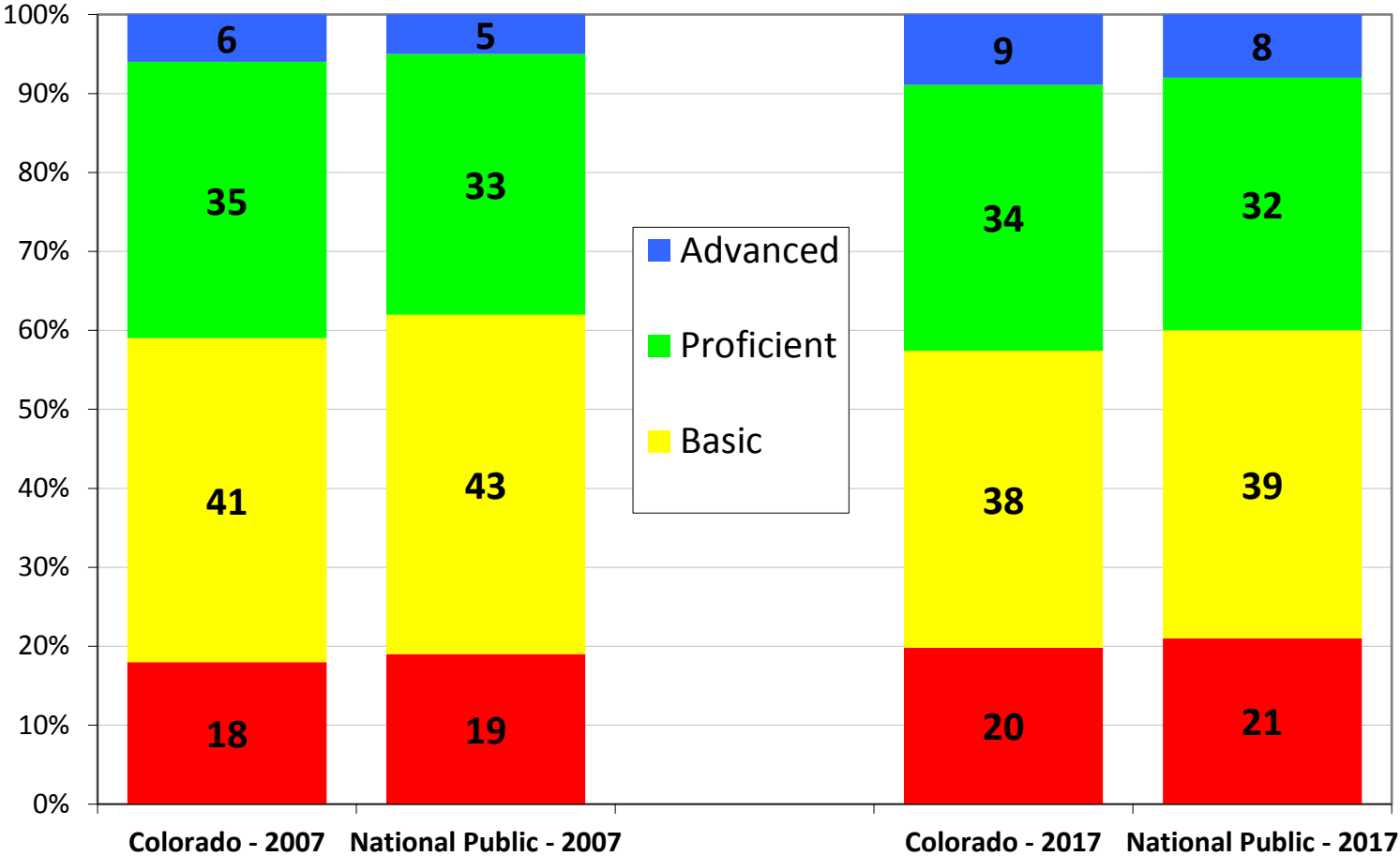
Using the average scale score on the NAEP 2017 Math assessment for each state, this bar graph compares Colorado 4th graders with the other 49 states, the District of Columbia and the Department of Defense schools. The red bar indicates the National Public average. The blue bar represents Colorado. Darker shaded bars indicate significant difference from National Public average.

Darker shaded bars indicate significant change



Change in NAEP Math Grade 4 Achievement Levels Over Ten Years

NAEP Mathematics - Grade 4
Achievement Levels: 2007 & 2017

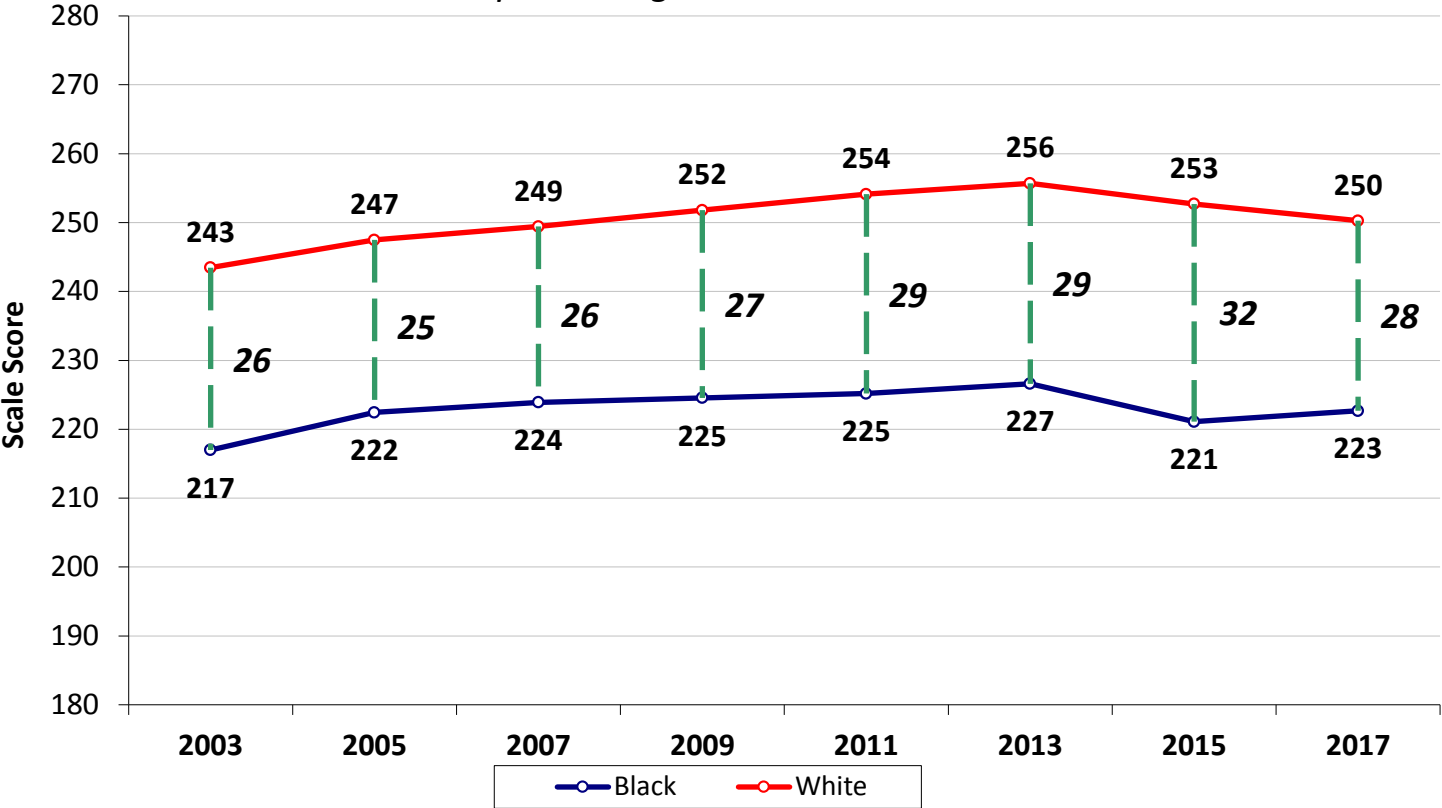


The bar chart on the far left compares the percentages at each NAEP Math achievement level for 4th graders in Colorado and National Public in 2007. The bar chart on the right compares the percentages at each NAEP Math achievement level for 4th grade in Colorado and National Public in 2017. Blue represents the percent of students scoring in the advanced achievement level. Green represents the percent of students scoring in the proficient achievement level. Yellow represents the percent of students scoring in the basic achievement level. Red represents the percent of students that scored below the basic achievement level.



Colorado NAEP Math Grade 4 White / Black Gap

**NAEP Mathematics Grade 4 – White / Black
Gap - Average Scale Score: 2003-2017**



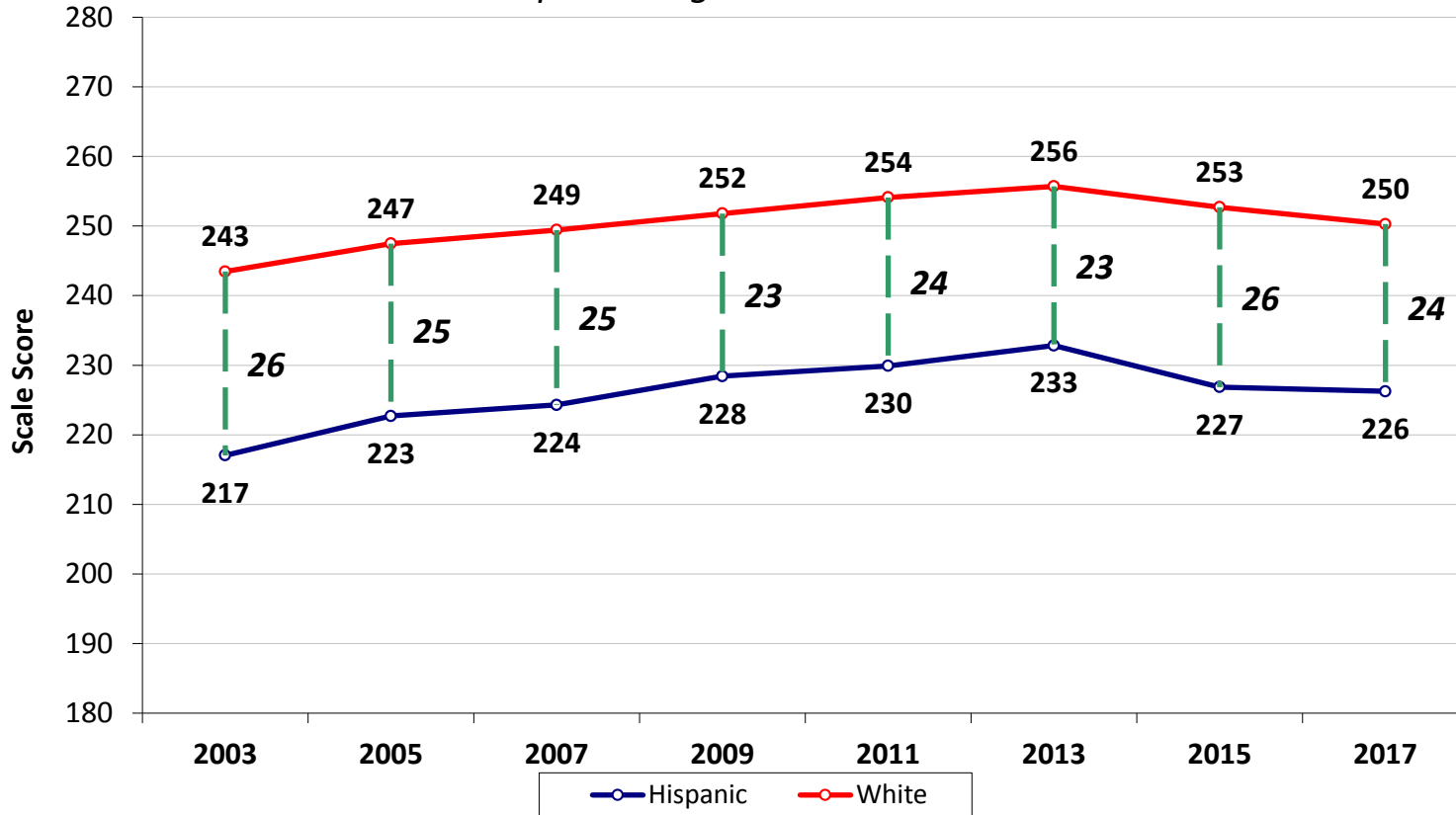
This is a comparison of Colorado 4th grade student subgroups using the average scale scores on the NAEP Math assessment extending back to 2003. The red line represents white student 4th grade average scale scores while the blue line represents black student 4th grade average scale scores. The dotted green vertical lines represent the score gaps between the student subgroups.

NOTE: The NAEP Mathematics scale ranges from 0 to 500. Observed differences are not necessarily statistically significant.
SOURCE: U.S. Department of Education, Institute of Education Sciences, National Center for Education Statistics, National Assessment of



Colorado NAEP Math Grade 4 White / Hispanic Gap

NAEP Mathematics Grade 4 – White / Hispanic Gap - Average Scale Score: 2003-2017



This is a comparison of Colorado 4th grade student subgroups using the average scale scores on the NAEP Math assessment extending back to 2003. The red line represents white student 4th grade average scale scores while the blue line represents Hispanic student 4th grade average scale scores. The dotted green vertical lines represent the score gaps between the student subgroups.

NOTE: The NAEP Mathematics scale ranges from 0 to 500. Observed differences are not necessarily statistically significant.

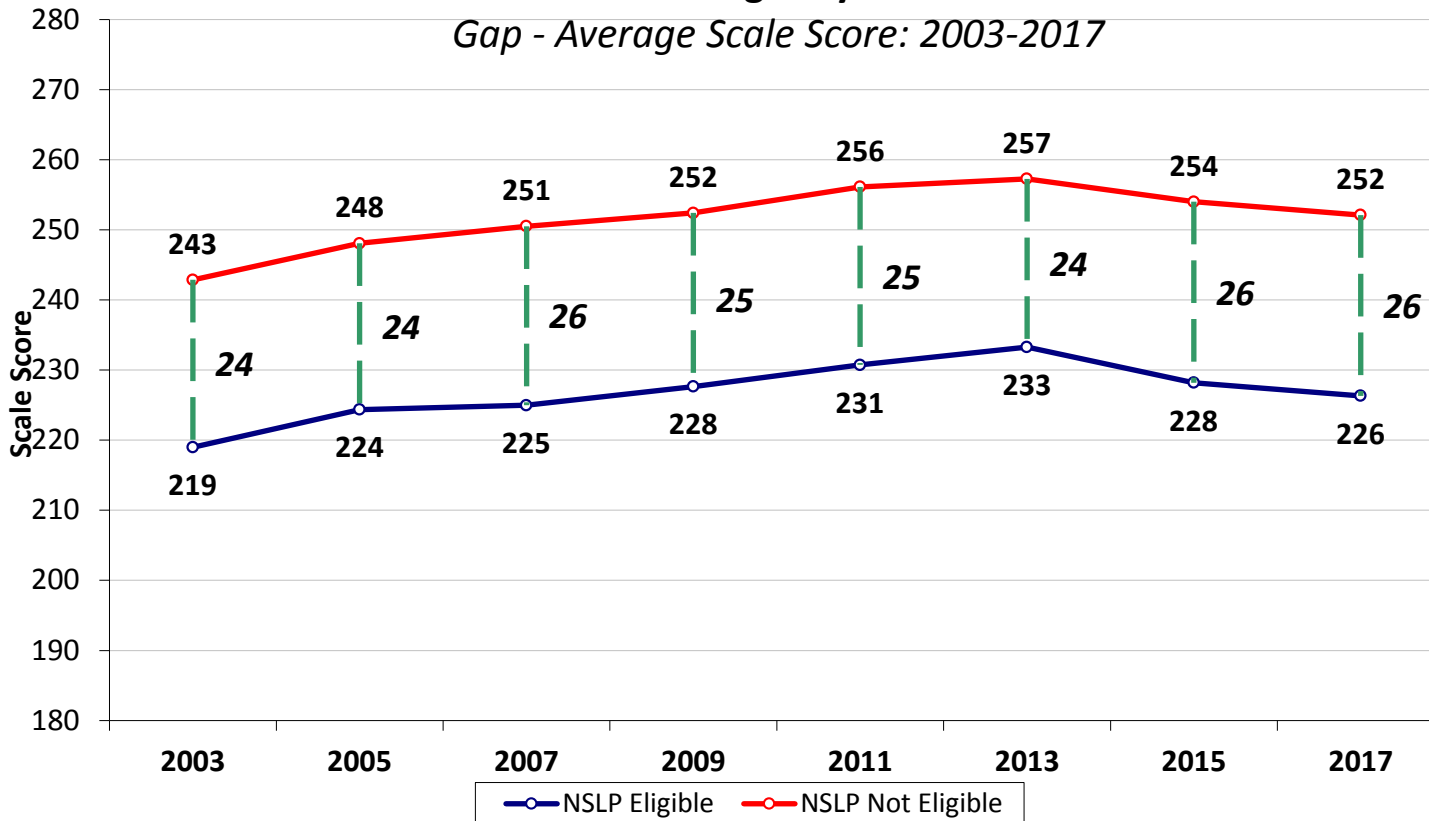
SOURCE: U.S. Department of Education, Institute of Education Sciences, National Center for Education Statistics, National Assessment of



Colorado NAEP Math Grade 4 Free and Reduced Lunch / Non- Free and Reduced Lunch Gap

NAEP Mathematics Grade 4 – National School Lunch Program Eligibility

Gap - Average Scale Score: 2003-2017



This is a comparison of Colorado 4th grade student subgroups using the average scale scores on the NAEP Math assessment extending back to 2003. The red line represents 4th grade average scale scores of students not eligible for free and reduced lunch while the blue line represents 4th grade average scale scores of students eligible for free and reduced lunch. The dotted green vertical lines represent the score gaps between the student subgroups.

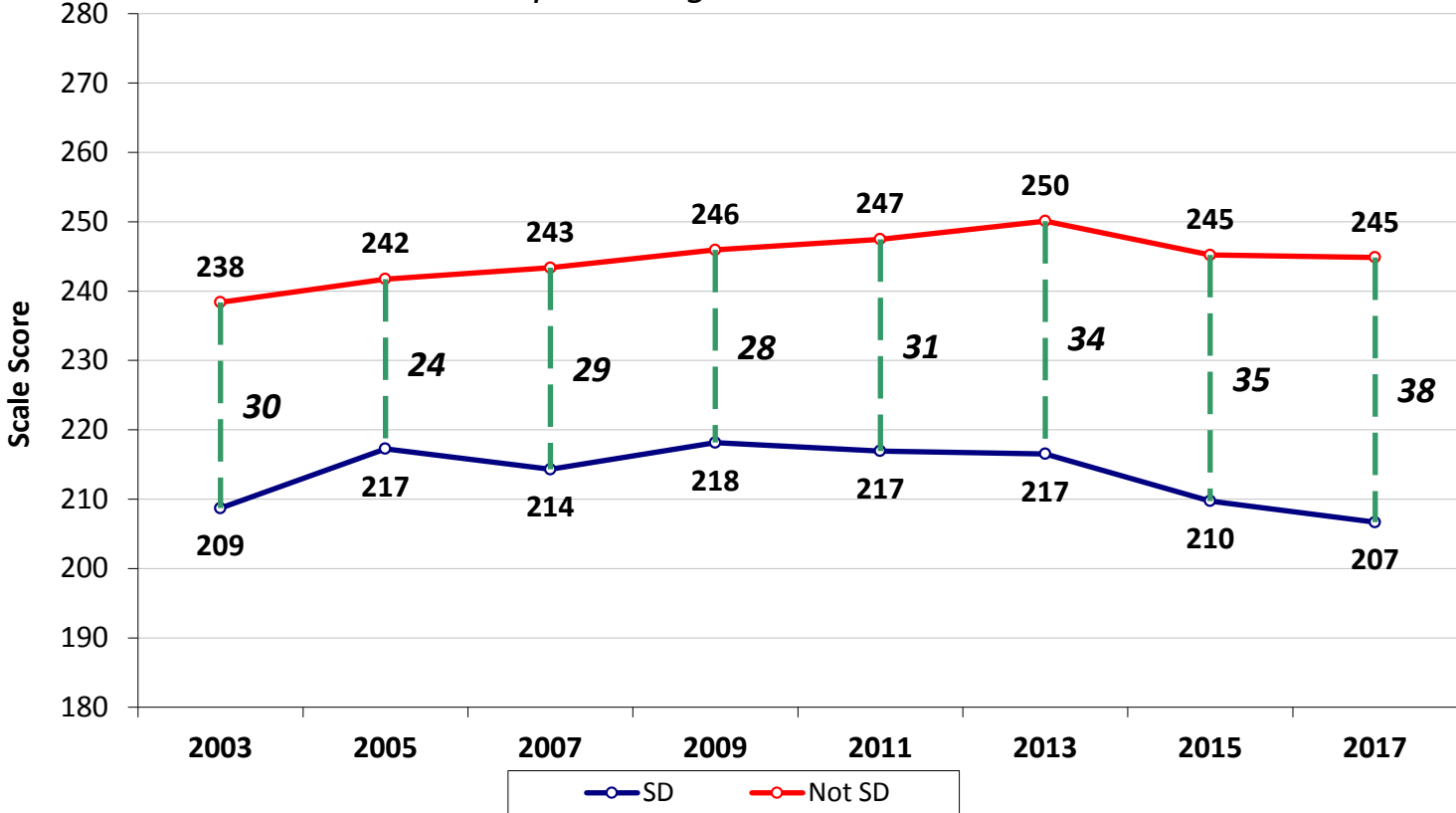
NOTE: The NAEP Mathematics scale ranges from 0 to 500. Observed differences are not necessarily statistically significant.

SOURCE: U.S. Department of Education, Institute of Education Sciences, National Center for Education Statistics, National Assessment of



Colorado NAEP Math Grade 4 Non-Disabled Students / Students with Disabilities Gap

NAEP Mathematics Grade 4 – Students with Disabilities Gap - Average Scale Score: 2003-2017

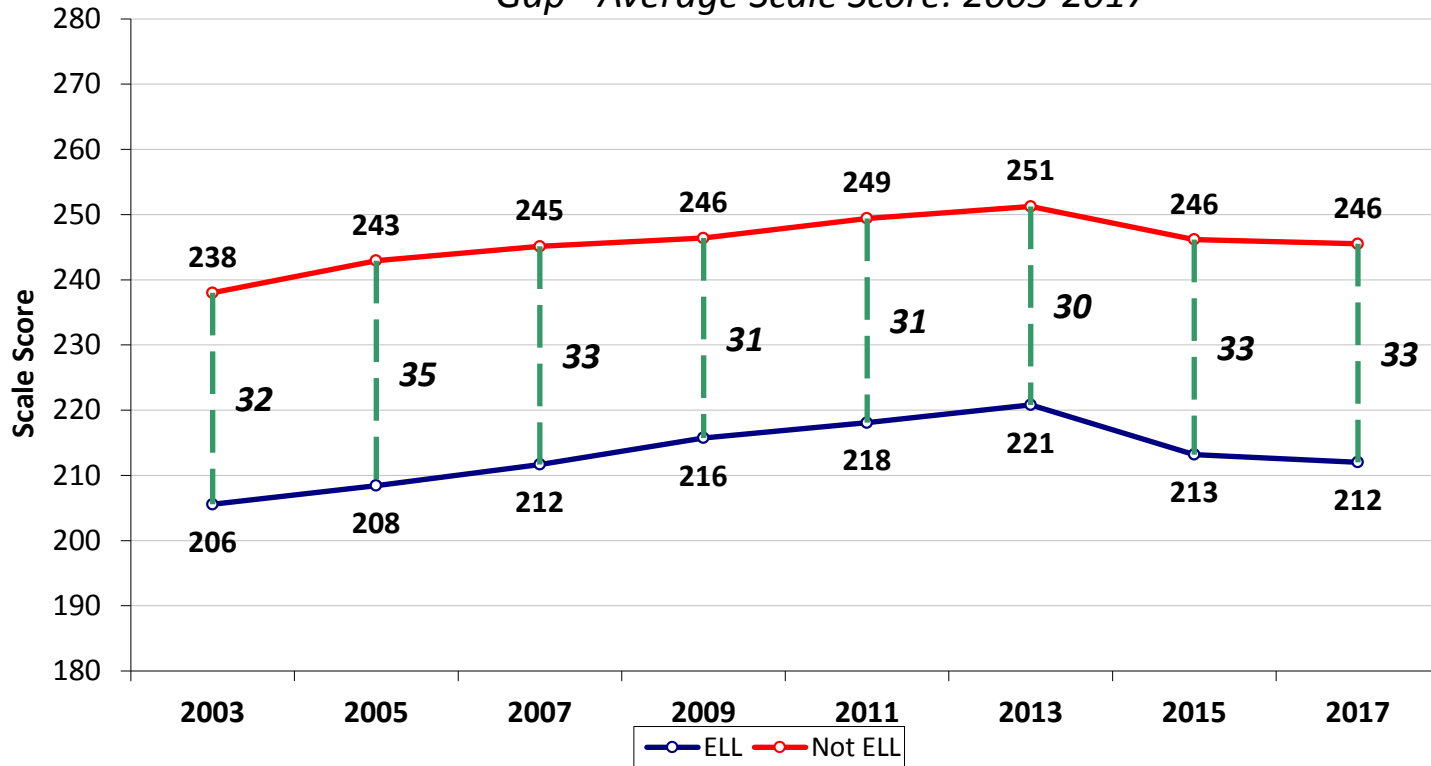


This is a comparison of Colorado 4th grade student subgroups using the average scale scores on the NAEP Math assessment extending back to 2003. The red line represents non-disabled students' 4th grade average scale scores while the blue line represents students with disabilities 4th grade average scale scores. The dotted green vertical lines represent the score gaps between the student subgroups.

NOTE: The NAEP Mathematics scale ranges from 0 to 500. Observed differences are not necessarily statistically significant.
SOURCE: U.S. Department of Education, Institute of Education Sciences, National Center for Education Statistics, National Assessment of

Colorado NAEP Math Grade 4 Non-English Language Learners / English Language Learners Gap

NAEP Mathematics Grade 4 – English Language Learners
Gap - Average Scale Score: 2003-2017



This is a comparison of Colorado 4th grade student subgroups using the average scale scores on the NAEP Math assessment extending back to 2003. The red line represents students who are not English language learners 4th grade average scale score while the blue line represents students who are English language learners 4th grade average scale score. The dotted green vertical lines represent the score gaps between the student subgroups.

NOTE: The NAEP Mathematics scale ranges from 0 to 500. Observed differences are not necessarily statistically significant.

Where can I learn more?

- <http://www.cde.state.co.us/assessment/conaep>
- <https://www.nationsreportcard.gov>