



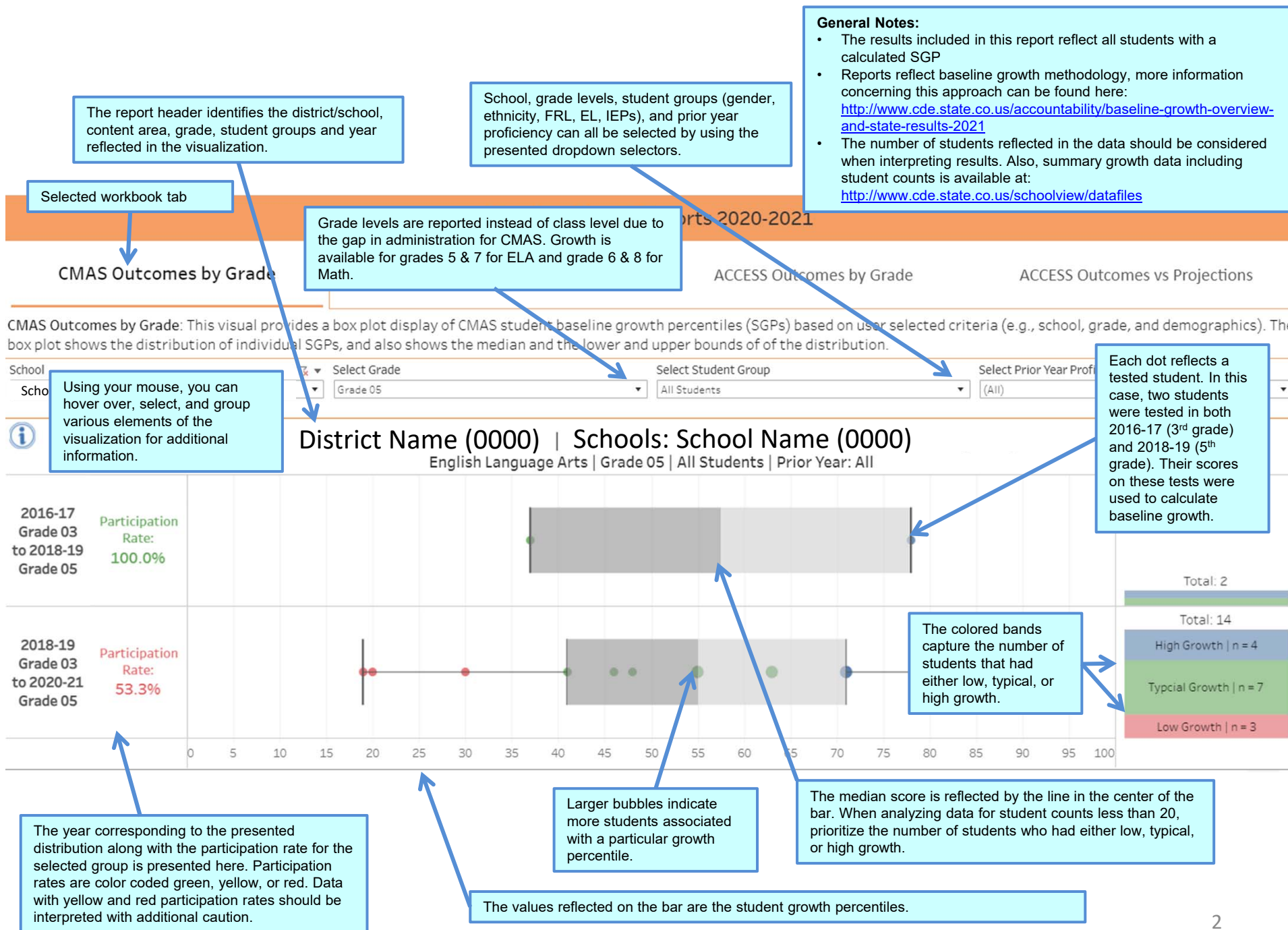
Baseline Growth Visualizations: Annotated Resources

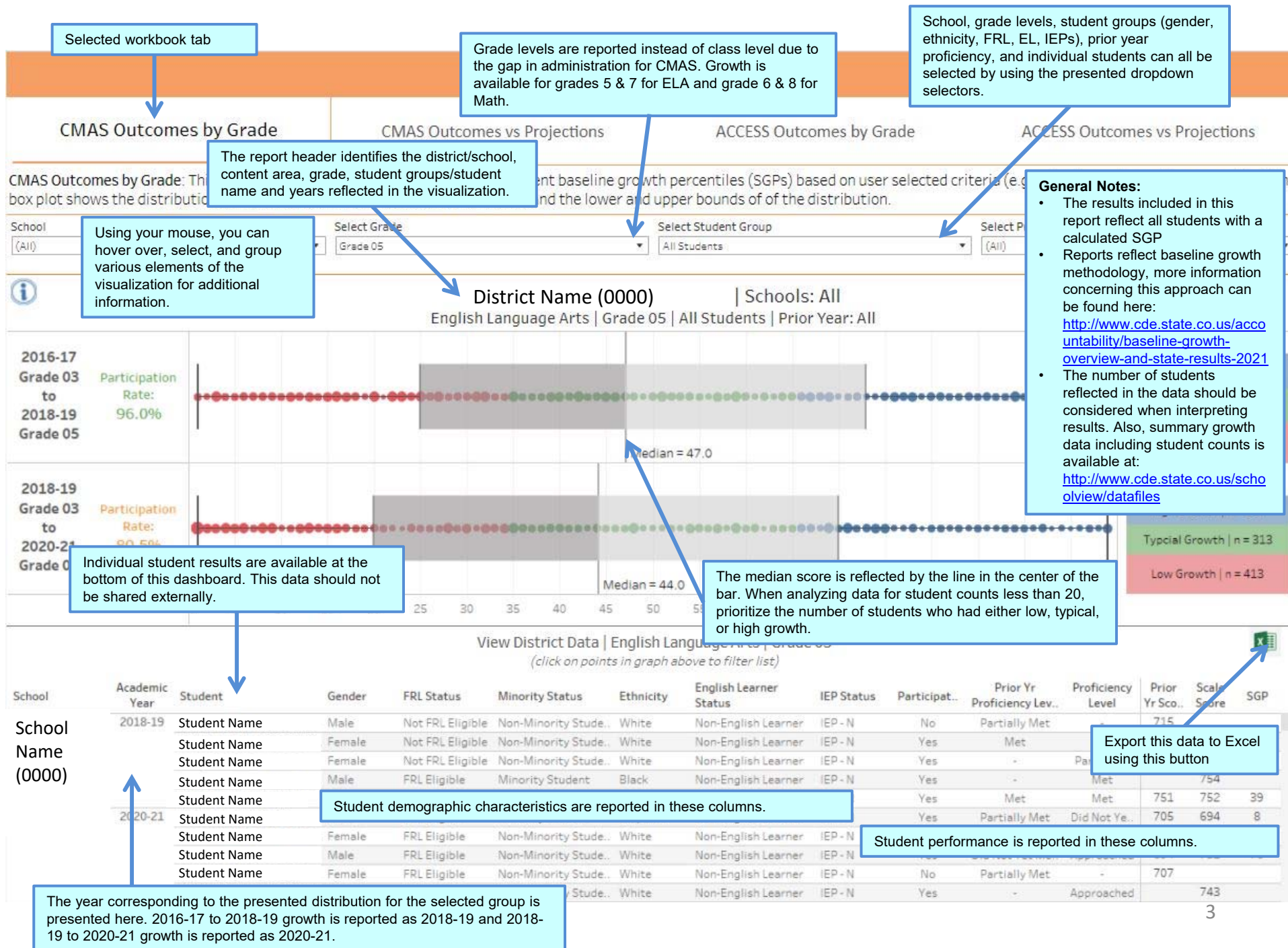
- In order to support understanding of the growth visualization tool, a series of annotated screenshots are provided in this document. Access to these visualizations are available through a free software called Tableau Reader. Information on how to find these visualizations and on how to use Tableau Reader has been shared with District Accountability Contacts.
- The growth visualization tool has four primary tabs, each reflecting either CMAS or ACCESS data by grade or with growth projections. This includes the following visuals:
 - **CMAS Outcomes by Grade (page 2):** a visual box plot display of CMAS student baseline growth percentiles (SGPs) based on user selected criteria (e.g., school, grade, and demographics). This display indicates the lower and upper bound of SGP scores along with the median score and individual scores included in the distribution. The data is displayed in two sections one for each of the most recent years in which data is available.
 - **CMAS Outcomes vs Projections (page 4):** a graph that displays change in CMAS scale score and proficiency level between years while also displaying the corresponding baseline growth percentile. The display can be displayed by state, district, or school results. It allows for selections by grade level, student group, and cohort group. In addition, individual student results can be displayed.
 - **ACCESS Outcomes by Grade (page 5):** a visual box plot display of WIDA-ACCESS student baseline growth percentiles (SGPs) based on user selected criteria (e.g., school, grade, and demographics). This display indicates the lower and upper bound of SGP scores along with the median score and individual scores that make up the score distribution.
 - **ACCESS Outcomes vs Projections (page 7):** a graph that displays change in WIDA-ACCESS scale score and proficiency level between years while also displaying the corresponding baseline growth percentile. The display can be displayed by state, district, or school results. It allows for selections by grade level, student group, and cohort group. In addition, individual student results can be displayed.

For more information concerning baseline growth, go to: <http://www.cde.state.co.us/accountability/baseline-growth-overview-and-state-results-2021>.

These visualizations include student-level information that should not be shared with external third parties. To learn more about protecting Student PII, go to: <https://www.cde.state.co.us/dataprivacyandsecurity>. Districts should consider how they may share this data within their system since all schools and student data is available within the dashboard. As a suggestion, it may be helpful to share individual screenshots with school-level administrators rather than the Tableau workbook in its entirety.

For additional questions regarding the presented visuals and/or requests for training on CDE data tools can be made to the following e-mail account: accountability@cde.state.co.us.





Grade levels are reported instead of class level due to the gap in administration for CMAS. Growth is available for grades 5 & 7 for ELA and grade 6 & 8 for Math.

School, grade levels, student groups (gender, ethnicity, FRL, EL, IEPs), prior year proficiency, and individual students can all be selected by using the presented dropdown selectors

General Notes:

- The results included in this report reflect all students with a calculated SGP
- Reports reflect baseline growth methodology, more information concerning this approach can be found here: <http://www.cde.state.co.us/accountability/baseline-growth-overview-and-state-results-2021>
- The number of students reflected in the data should be considered when interpreting results. Also, summary growth data including student counts is available at: <http://www.cde.state.co.us/schoolview/datafiles>

CMAS Outcomes by Grade

Selected workbook tab

CMAS Outcomes vs Projections

ACCESS Outcomes

CMAS Outcomes vs. Projections: This graph displays CMAS scale score and proficiency level outcomes across years along with district, or school level results, or to display outcomes for an individual student. Filters can also be used to change grade level, student group, or result set.

The report header identifies the district/school, content area, grade, student groups/student name and years reflected in the visualization.

Select Current Grade Level

Grade 05

Select Student Group

All Students

Select Result Set

All Results Both Years

Select Students

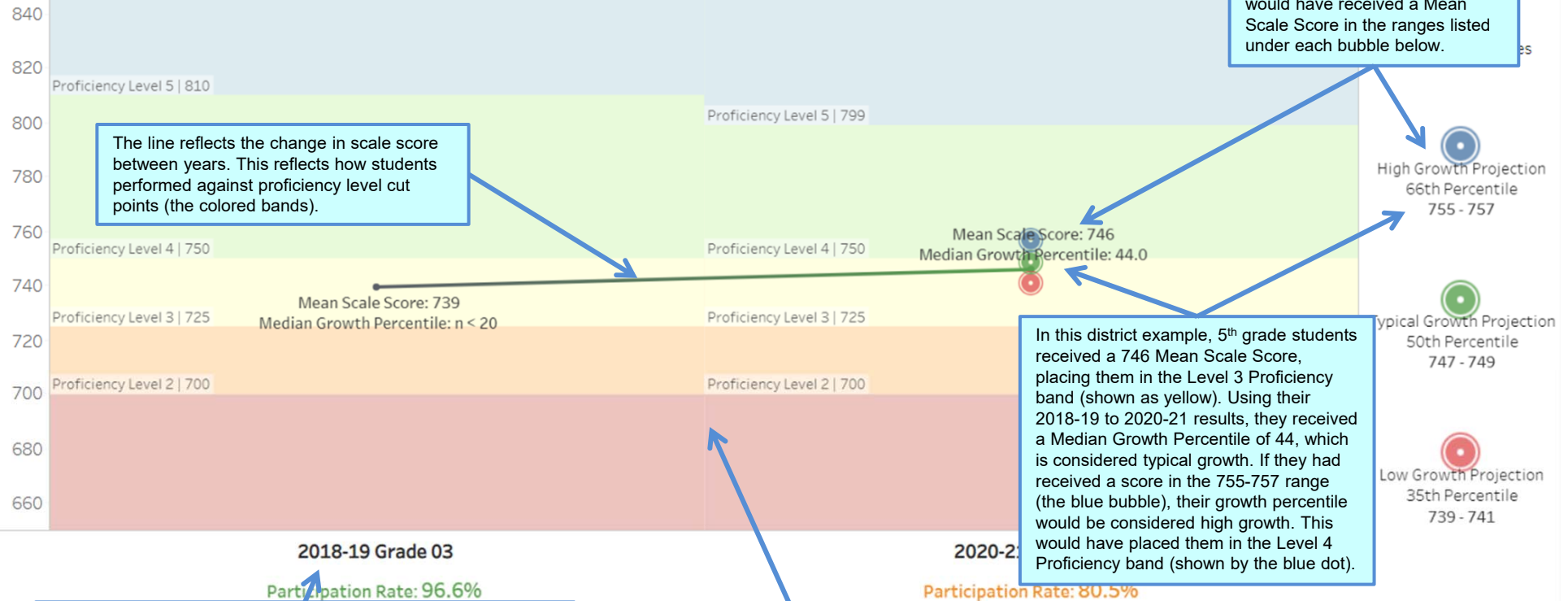
(All)

Using your mouse, you can hover over, select, and group various elements of the visualization for additional information.

District Name (0000) | Schools: All
English Language Arts | Grade 05 | All Students
All Results Both Years

Each colored bubble corresponds to the amount of growth that would have been necessary to reach the identified score band. For a student to reach the projected placement demonstrated by the bubbles on the proficiency bands, they would have received a Mean Scale Score in the ranges listed under each bubble below.

The line reflects the change in scale score between years. This reflects how students performed against proficiency level cut points (the colored bands).



In this district example, 5th grade students received a 746 Mean Scale Score, placing them in the Level 3 Proficiency band (shown as yellow). Using their 2018-19 to 2020-21 results, they received a Median Growth Percentile of 44, which is considered typical growth. If they had received a score in the 755-757 range (the blue bubble), their growth percentile would be considered high growth. This would have placed them in the Level 4 Proficiency band (shown by the blue dot).

The year corresponding to the presented distribution along with the initial grade level for the selected group is presented here.

Each colored proficiency band reflects the range of scores associated with a particular CMAS performance level.

